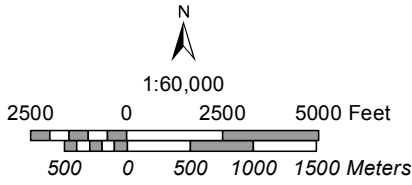


# Lake Pleasant Regional Park

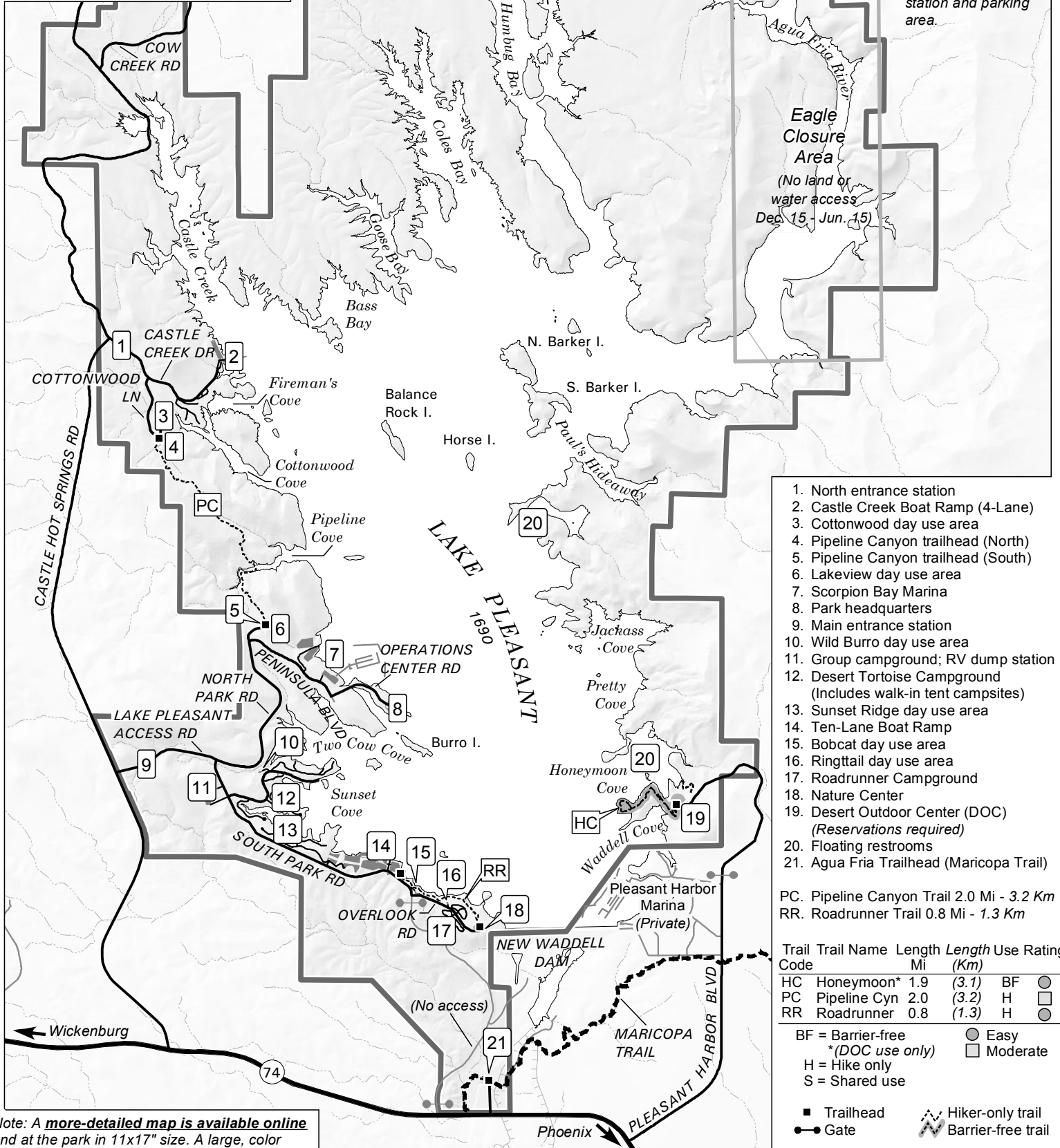
## Overview



**For Urgent Situations  
call Sheriff's Dispatch  
602-876-1011.  
For Emergencies  
call 911.**

Limited access to the Agua Fria arm. Take I-17 and exit on Table Mesa Road; drive west to the self-pay station and parking area.

**Eagle Closure Area**  
(No land or water access Dec. 15 - Jun. 15)



1. North entrance station
2. Castle Creek Boat Ramp (4-Lane)
3. Cottonwood day use area
4. Pipeline Canyon trailhead (North)
5. Pipeline Canyon trailhead (South)
6. Lakeview day use area
7. Scorpion Bay Marina
8. Park headquarters
9. Main entrance station
10. Wild Burro day use area
11. Group campground; RV dump station
12. Desert Tortoise Campground (Includes walk-in tent campsites)
13. Sunset Ridge day use area
14. Ten-Lane Boat Ramp
15. Bobcat day use area
16. Ringtail day use area
17. Roadrunner Campground
18. Nature Center
19. Desert Outdoor Center (DOC) (Reservations required)
20. Floating restrooms
21. Agua Fria Trailhead (Maricopa Trail)

PC. Pipeline Canyon Trail 2.0 Mi - 3.2 Km  
RR. Roadrunner Trail 0.8 Mi - 1.3 Km

Trail Code	Trail Name	Length Mi	Length (Km)	Use	Rating
HC	Honeymoon*	1.9	(3.1)	BF	●
PC	Pipeline Cyn	2.0	(3.2)	H	□
RR	Roadrunner	0.8	(1.3)	H	●

BF = Barrier-free  
\* (DOC use only)  
H = Hike only  
S = Shared use

■ Trailhead  
● Gate  
⚡ Hiker-only trail  
⚡ Barrier-free trail

Note: A more-detailed map is available online and at the park in 11x17" size. A large, color waterproof map is available for sale.